



OAKVIEW RESTORATIONS

Dental implant laboratory

Summer Newsletter

Summer 2016

Welcome to our Summer Newsletter

This is the second edition of our quarterly newsletter in which we aim to keep you informed of the latest company and product developments that could benefit your business. We hope you enjoy the read.

The Digital Denture

While CAD/CAM has been commonly used in the crown and bridge side of the dental laboratory for many years, it feels like dentures have missed out on the digital revolution. However, things appear to be changing and manufacturers of digital systems are now starting to approach and address the fabrication of complete dentures.

Roy Davies, our CDT and Prosthetics Technician was recently offered the opportunity to evaluate and provide feedback on the AmannGirrbach Ceramill system.



Milling Upper Base

Unlike most of the digital denture systems, the Amann FDS system does not produce a finished denture as the end result. Instead, it fabricates a wax milled try-in, and uses teeth from Heraus Kulzer based on their Premium and Mondial range of teeth; a well known and respected quality tooth. Our in-house Ceramill system consists of the Ceramill Map 400 Scanner and the Motion 2 5x milling unit; this 5 axis milling unit is essential for the milling of the wax base and teeth.

"The service is fantastic and they always produce beautiful work - nothing is too much trouble."

*- Dr Peter Collins, BDS
(Lond), Beaconsfield*

In This Issue

- The digital denture
- Update on our new Denture Clinic & Mobile Denture Service
- New Material - High Performance Polymer
- Anti-snoring devices

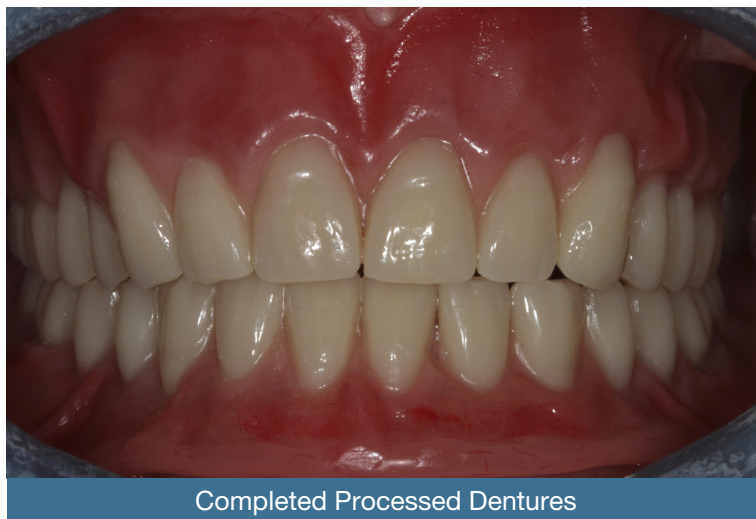
Article continued on next page...

The Digital Denture continued:

Design (CAD) and Production (CAM) Stages

The various stages for producing the case can be broken down and can be described as follows:

- Preparation of models
- Scanning of models & aesthetic block
- Model analysis (CAD software)
- Selection of teeth (CAD software)
- Virtual articulation (CAD software)
- Determination of basal milling direction
- Denture base design (CAM software)
- Preparation for milling (CAM software)



Having trialled a complete denture for a patient, using this system, the proof was when the wax try-in was conducted with the patient. The articulation was excellent with the wax bases fitting well and the patient was very pleased with the overall aesthetics. Amann's idea of producing a wax try instead of a finished denture was appealing since any occlusal errors recorded clinically may be an expensive re-mill in other systems but the wax try could be easily adjusted.

We also liked the fact we can process the denture to our exact preference and being able to use a top quality tooth is great as we are sure more reputable tooth manufacturers will soon join Amann in providing a wider tooth choice. We shall watch with interest how the software is developed and perfected to include single full arch and partial denture design, which is on the horizon.

Update on our New Denture Clinic



We are making steady progress with our new on-site Denture Clinic which is scheduled to open over the coming months. As well as offering a full denture service, we will be offering a **Mobile Denture Service** to local Care Homes also. The services we will offer will be:

- Denture Repairs
- Relines
- Denture Cleaning
- Totally New Dentures



High Performance Polymer for the digital fabrication of both removable and fixed restorations, such as crowns

Another new material we have been working with in the Oakview Laboratory is a high performance polymer—the Ceramill PEEK.

Specially developed for the CAD/CAM technique, the material is based on a high performance PEEK polymer, with proven biocompatibility, which ensures its long term use.

PEEK sets a new standard in high-performance materials for dental restorations with more than 10 years of proven experience and successful use with human implants.

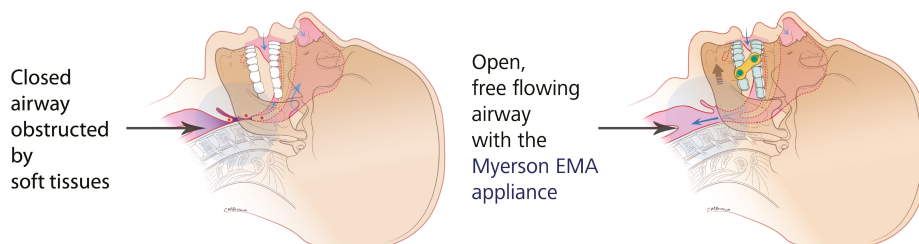


Anti Snoring & Sleep Apnoea

EMA's patented design uses interchangeable elastic straps attached to pressure-formed custom upper and lower trays, which allow the gradual advancement of the mandible until treatment is successful.

The Myerson EMA Appliance offers several advantages:

- It fits entirely inside the mouth and the user can still talk whilst wearing it
- It is free of metal and the elastic straps are latex free
- The recipient can easily change the elastic straps themselves



To find out more about any of the products or services mentioned within this newsletter, please contact us directly:

01494 569466

Units 1 & 2 Ministry Wharf,
Wycombe Road,
Saunderton,
Bucks,
HP14 4HW.

info@oakviewrestorations.co.uk

www.oakviewrestorations.co.uk